



ELECTRONIC COPY

LG723517995
Report verification at igi.org



July 21, 2025
IGI Report Number **LG723517995**
Description **LABORATORY GROWN DIAMOND**
Shape and Cutting Style **SQUARE CUSHION MODIFIED BRILLIANT**
Measurements **19.64 X 19.62 X 12.30 MM**
GRADING RESULTS
Carat Weight **38.88 CARATS**
Color Grade **G**
Clarity Grade **VS 2**

LABORATORY GROWN DIAMOND REPORT

July 21, 2025
IGI Report Number **LG723517995**
Description **LABORATORY GROWN DIAMOND**
Shape and Cutting Style **SQUARE CUSHION MODIFIED BRILLIANT**
Measurements **19.64 X 19.62 X 12.30 MM**

GRADING RESULTS

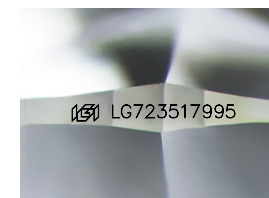
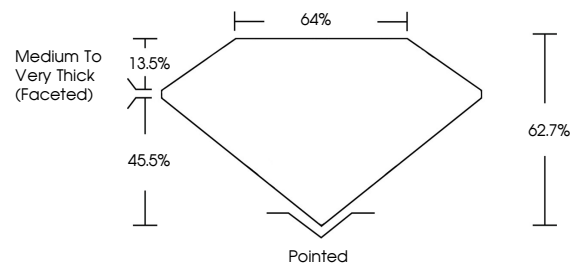
Carat Weight **38.88 CARATS**
Color Grade **G**
Clarity Grade **VS 2**

ADDITIONAL GRADING INFORMATION

Polish **EXCELLENT**
Symmetry **EXCELLENT**
Fluorescence **NONE**
Inscription(s) **IGI LG723517995**

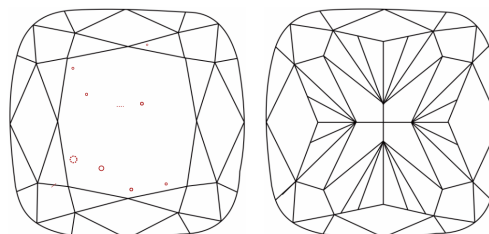
Comments: This Laboratory Grown Diamond was created by Chemical Vapor Deposition (CVD) growth process.
Type IIa

PROPORTIONS



Sample Image Used

CLARITY CHARACTERISTICS



KEY TO SYMBOLS

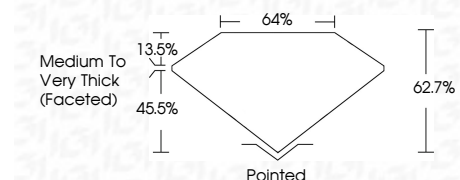
Red symbols indicate internal characteristics.
Green symbols indicate external characteristics.

COLOR

D E F G H I J Faint Very Light Light

CLARITY

IF	VS ¹⁻²	VS ¹⁻²	SI ¹⁻²	I ¹⁻³
Internally Flawless	Very Very Slightly Included	Very Slightly Included	Slightly Included	Included



ADDITIONAL GRADING INFORMATION

Polish **EXCELLENT**
Symmetry **EXCELLENT**
Fluorescence **NONE**
Inscription(s) **IGI LG723517995**
Comments: This Laboratory Grown Diamond was created by Chemical Vapor Deposition (CVD) growth process.
Type IIa



July 21, 2025
IGI Report No **LG723517995**
SQUARE CUSHION MODIFIED BRILLIANT
19.64 X 19.62 X 12.30 MM
Carat Weight **38.88 CARATS**
Color Grade **G**
Clarity Grade **VS 2**
Depth **62.7%**
Table **64%**
Girdle **Medium to Very Thick (Faceted)**
Culet **Pointed**
Polish **EXCELLENT**
Symmetry **EXCELLENT**
Fluorescence **NONE**
Inscription(s) **IGI LG723517995**
Comments: This Laboratory Grown Diamond was created by Chemical Vapor Deposition (CVD) growth process.
Type IIa