




ELECTRONIC COPY

LABORATORY GROWN DIAMOND REPORT

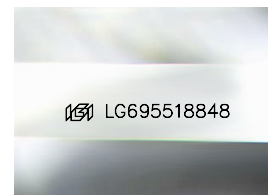
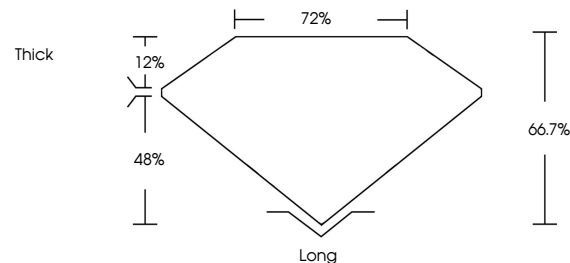
LG695518848
Report verification at igi.org

April 11, 2025	
IGI Report Number	LG695518848
Description	LABORATORY GROWN DIAMOND
Shape and Cutting Style	EMERALD CUT
Measurements	7.72 X 5.35 X 3.57 MM
GRADING RESULTS	
Carat Weight	1.48 CARAT
Color Grade	E
Clarity Grade	VS 1

ADDITIONAL GRADING INFORMATION

Polish	VERY GOOD
Symmetry	VERY GOOD
Fluorescence	NONE
Inscription(s)	 LG695518848
Comments: This Laboratory Grown Diamond was created by Chemical Vapor Deposition (CVD) growth process.	
Type IIa	

PROPORTIONS



Sample Image Used

COLOR

D E F G H I J Faint Very Light Light

CLARITY

IF	VS ¹⁻²	VS ¹⁻²	SI ¹⁻²	I ¹⁻³
Internally Flawless	Very Very Slightly Included	Very Slightly Included	Slightly Included	Included

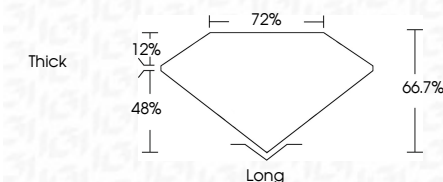
LABORATORY GROWN DIAMOND REPORT



April 11, 2025	
IGI Report Number	LG695518848
Description	LABORATORY GROWN DIAMOND
Shape and Cutting Style	EMERALD CUT
Measurements	7.72 X 5.35 X 3.57 MM
GRADING RESULTS	
Carat Weight	1.48 CARAT
Color Grade	E
Clarity Grade	VS 1

ADDITIONAL GRADING INFORMATION

Polish	VERY GOOD
Symmetry	VERY GOOD
Fluorescence	NONE
Inscription(s)	 LG695518848
Comments: This Laboratory Grown Diamond was created by Chemical Vapor Deposition (CVD) growth process.	
Type IIa	



© IGI 2020, International Gemological Institute

FD - 10 20



THIS DOCUMENT WAS PRODUCED WITH THE FOLLOWING SECURITY MEASURES: SPECIAL DOCUMENT PAPER, INK SCREENS, WATERMARK, BACKGROUND DESIGNS, HOLOGRAM, AND OTHER SECURITY FEATURES NOT LISTED AND DO EXCEED DOCUMENT SECURITY INDUSTRY GUIDELINES.

www.igi.org

April 11, 2025
GI Report No LG695518848

GI Report No LG6051 18048	1.48 CARAT
EMERALD CUT	E
7.72 X 4.35 X 3.57 MM	VS 1
Corat Weight	66.7%
Color Grade	7/8
Clarity Grade	Thick
Depth	Long
Table	VERY GOOD
Graile	VERY GOOD
Culet	NONE
Polish	VERY GOOD
Symmetry	NONE
Fluorescence	NONE
	Color Grade 18048

Comments:
This Laboratory Grown Diamond was created by Chemical Vapor Deposition (CVD) growth process.